



Kimberly-Clark
Filtration Products

Kimberly-Clark Filtration Media Technical Performance

Kimberly-Clark Filtration Media

Kimberly-Clark Filtration Media is positioned as a superior performing media

- Low pressure drop
- Higher initial efficiency
- Sustained efficiency over time
- High dust holding capacity
- Non-shedding
- Resistant to microbial growth



Kimberly-Clark Filtration Media

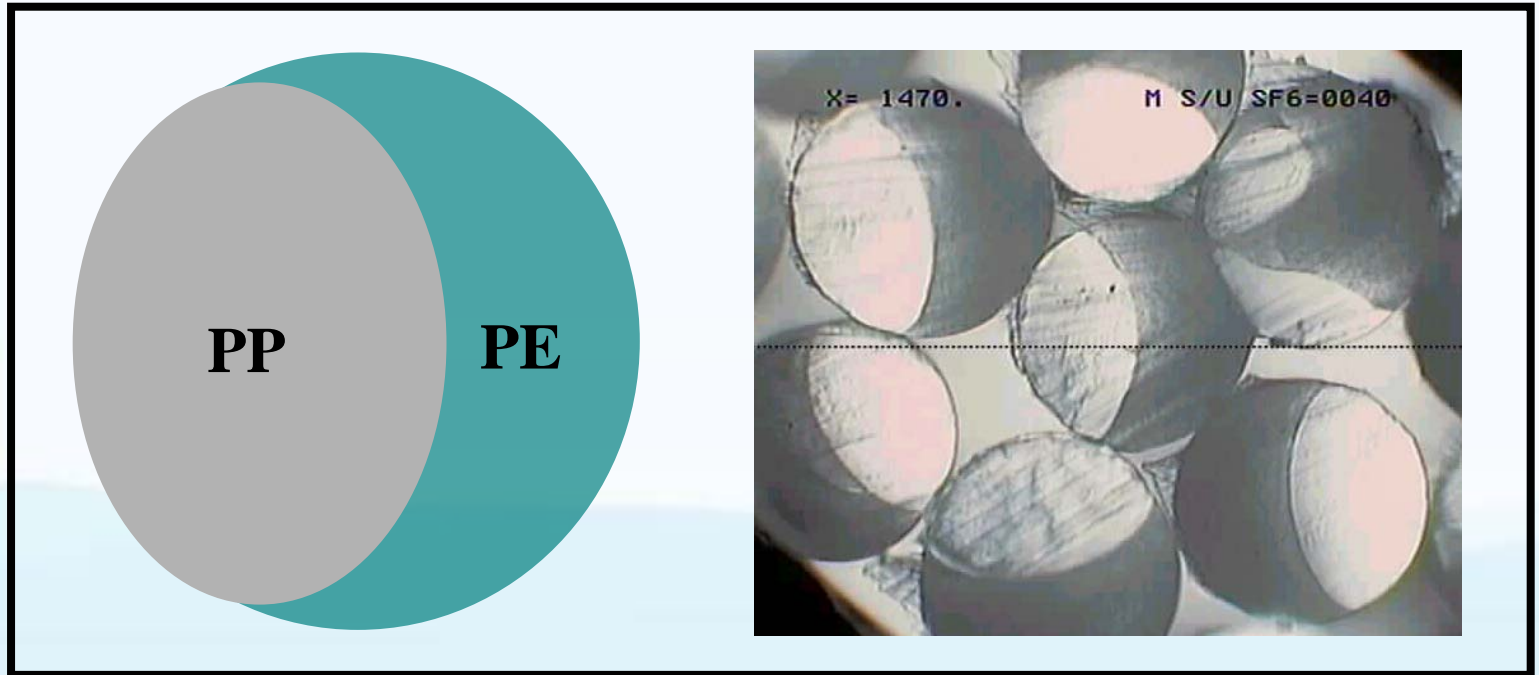
Three Key Features:

- 1. Uniquely Formed Fibers**
- 2. Engineered Gradient Structure**
- 3. Electrostatically enhanced**



Kimberly-Clark Filtration Media

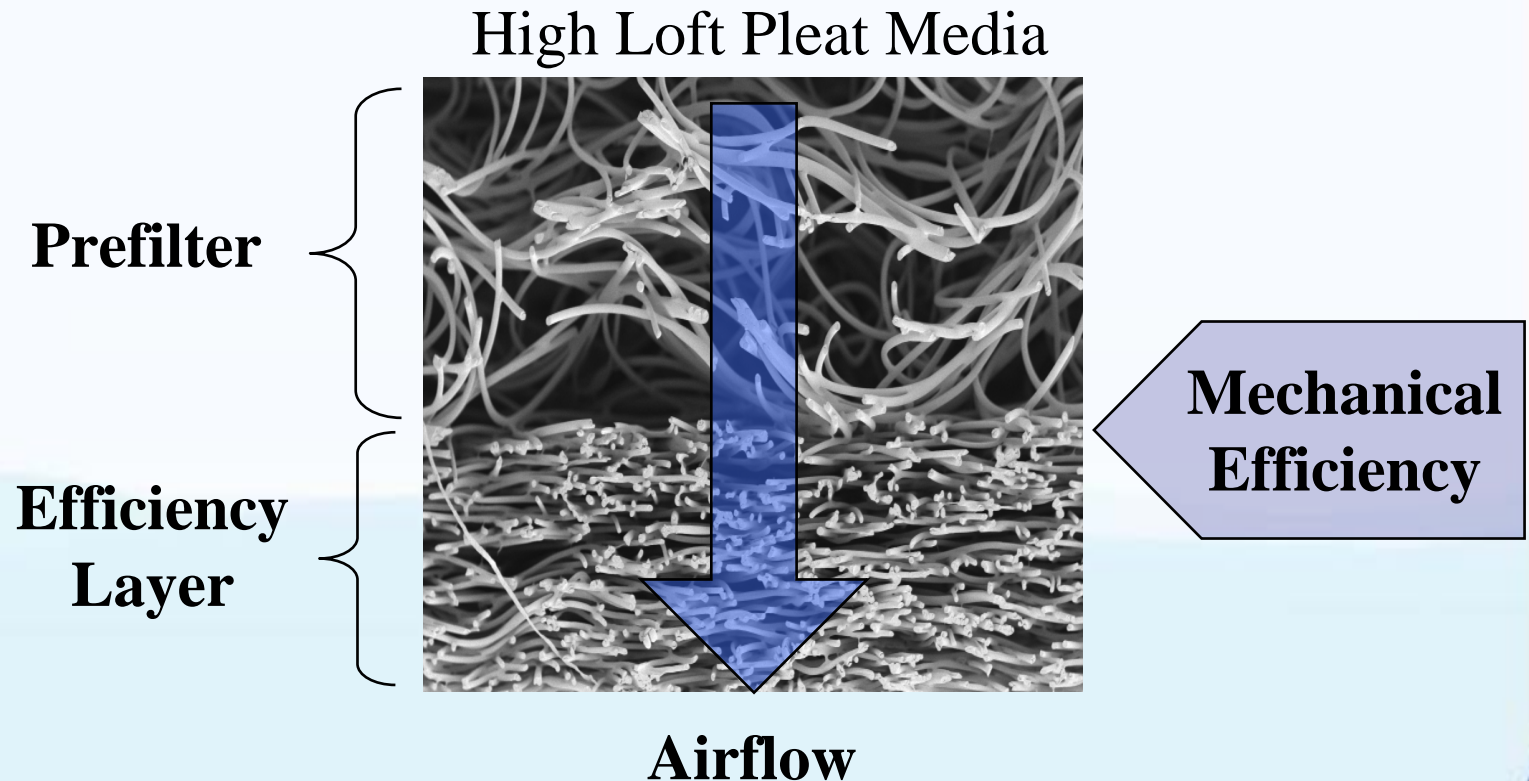
1. Uniquely Formed Fibers



Side-by-Side Bicomponent Filaments

Kimberly-Clark Filtration Media

2. Engineered Gradient Structure



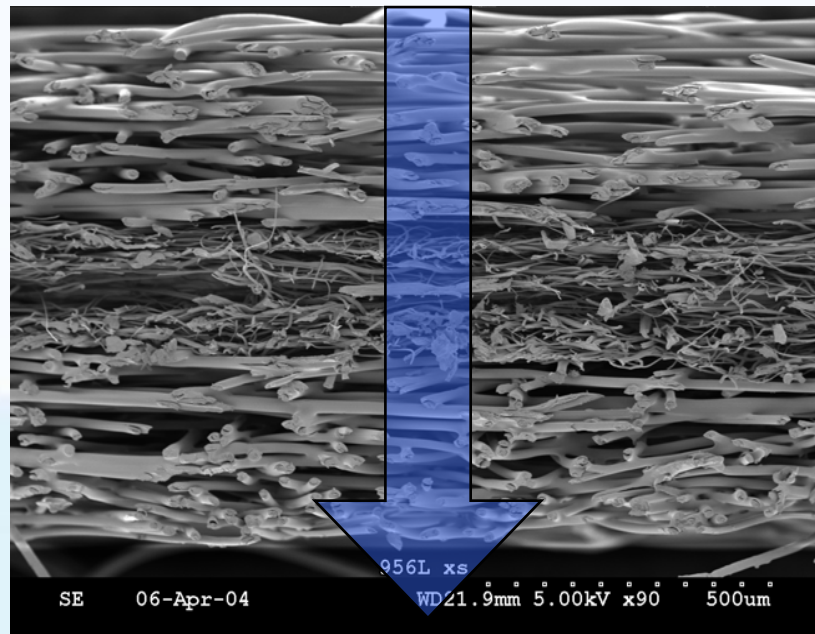
Kimberly-Clark Filtration Media

2. Engineered Gradient Structure

Low Loft Rigid Pleat Media

Prefilter

Efficiency
Layer

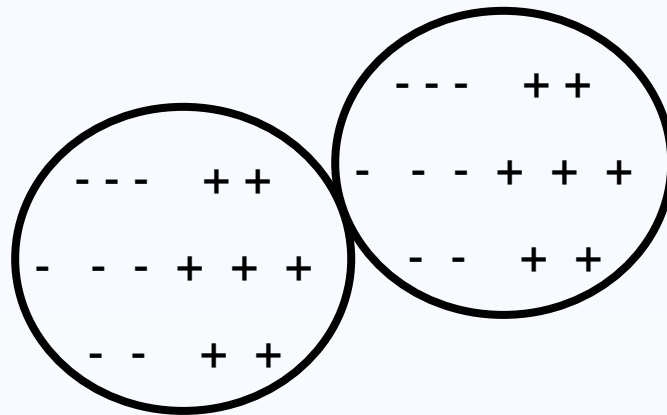


Mechanical
Efficiency

Airflow

Kimberly-Clark Filtration Media

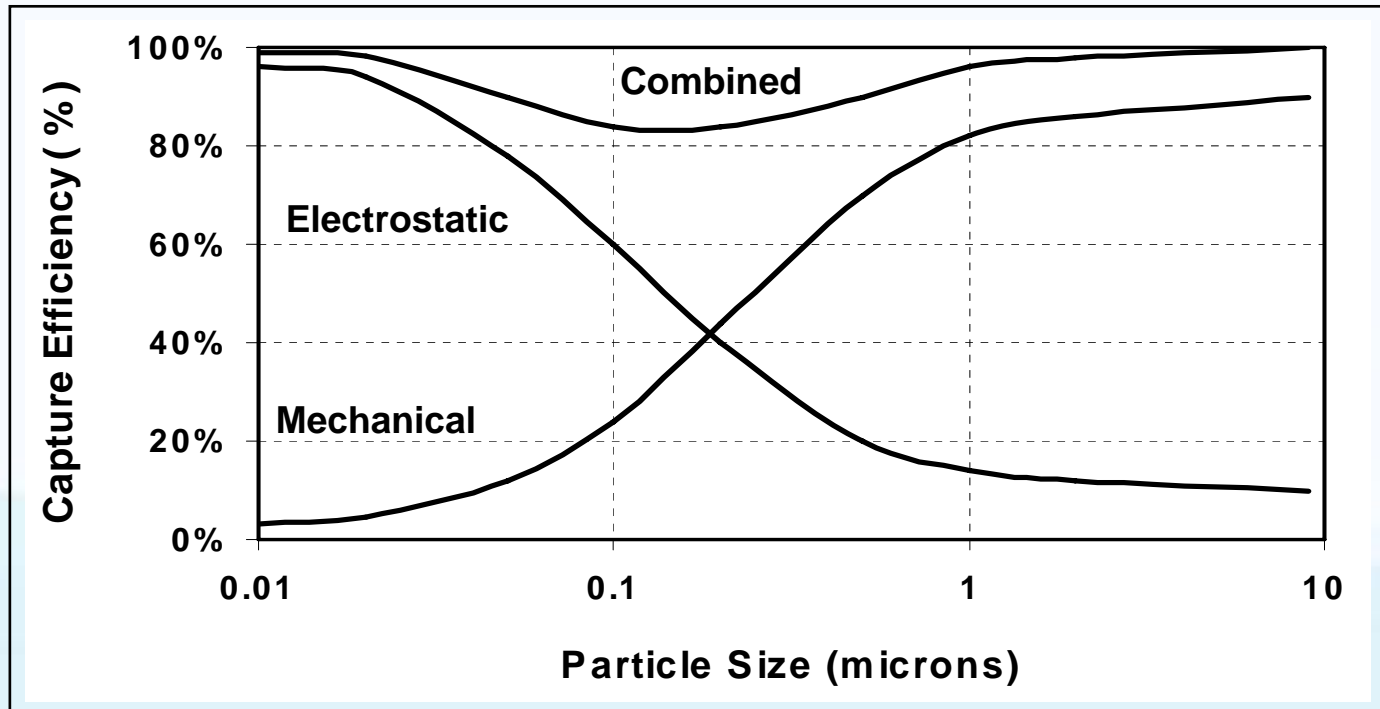
3. Electrostatically Enhanced



Electrostatic Filter - A mechanical filter whose collection efficiency is *augmented* by the development of an electrostatic charge on the media by means other than a continuous power source.

Kimberly-Clark Filtration Media

Mechano-electret Performance



The best filter is a good mechanical filter augmented with an electrostatic charge

Kimberly-Clark Filtration Media

